

ENACT energy auditor professional profile, training and qualification scheme

Giulianova, 22nd June 2016 – Final conference

RENAEL – AGENA Graziano D'Eustachio



Profile

Qualification scheme

Training



PROFILE

PROFILE	NOTES
Professional technician	Specific training and/or working experience
Energy audit	methodology according to UNI CEI EN 16247 parts 1 and 2
Residential sector	Covers individual dwellings and single family houses, (not included in UNI CEI EN 16247 parts 1 and 2)
Modular approach	tasks and competences integrated within professional development paths related to the overall civil sector (including the tertiary sector and public administration in addition to the residential one), the industrial as well as the transport one



ENACT ENERGY AUDITOR TASKS

Data
collection

Data
analysis

Identification of
improvement
measures

Field work

Economic
assessment

Communication with
the client

Implementation
and monitoring

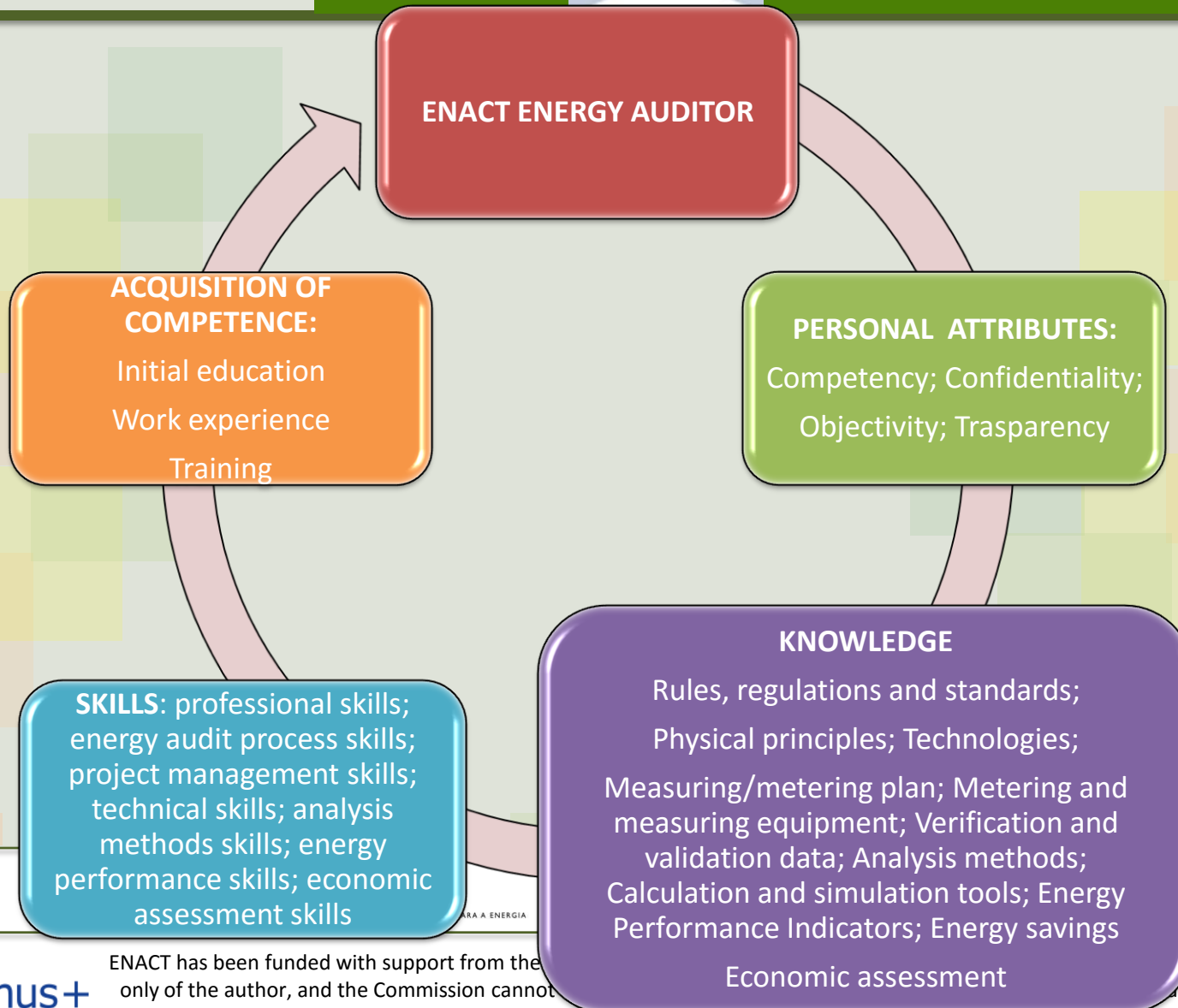


PROFILE

AREA DI AZIONE	ATTIVITA'
Management (vertical and trasversal dimension)	<p>Planning the energy audit in terms of scope, resources and time schedule/management</p> <p>Coordination</p> <p>Conflicts management</p> <p>Communication and reporting</p>
Auditing	<p>Collection of energy historical consumptions and collection of information about external conditions</p> <p>Representation of the energy situation of the integrated building system</p>
Planning	<p>Definition of the measures to improve the energy performance</p> <p>Economic assessment of the proposed energy efficiency improvement opportunities</p> <p>Technical assessment of the proposed energy efficiency improvement opportunities</p> <p>Elaboration of the energy action plan for the proper realisation of energy investments</p>
Implementation/ Monitoring	<p>Implementation the selected energy efficient measures</p> <p>Monitoring of the energy consumptions and performances</p> <p>Implementation of energy efficiency measures (if any)</p>



PROFILE





QUALIFICATION SCHEME

QUALIFICATION SCHEME

Entry level

Training

Qualification





QUALIFICATION SCHEME

QUALIFICATION SCHEME

Entry level

Training

Qualification scheme

education *

Specific working experience (years)*

Technical degree (3 and 5 years)

0

Technical diploma

2

Other degrees

3

Other diploma

3

**) suggested – discretionary requirements*



QUALIFICATION SCHEME

Qualification scheme

Entry level

Training

Qualification

Entry assessment

Module assessment

Training course final exam

- Recommended possession of the educational / experience level
- Entry level exam: aimed at verifying the knowledge prerequisites to attend the course, is made up of 30 multiple choice general questions on the course topics
- The threshold of the entry level is set at 50%

- Aimed at validating the competences acquired per each module and to assign the ECVET points. It is made up of multiple choice questions on the course topics
- The threshold is set at 70%
- The passing of the test enables the participant to gain the ECVET points; without having to undertake the training course

- Aimed at verifying the audit overall competences covering the overall professional scope and activities (audit, management, economical and technical planning, implementation and monitoring)
- Written and oral exam, based on theoretical knowledge and simulation or case studies
- The threshold is set at 70%



QUALIFICATION SCHEME

QUALIFICATION SCHEME

Entry level

Training

Qualification

Carried out by certified and/or sectorial training organizations

Examining board: at least 2 at least two members with specific technical skills in the field of energy audit for the residential/civil sector, including management, economical and technical planning, implementation and monitoring

Qualification duration: 5 years
Qualification maintenance: through curriculum analysis and competences update



QUALIFICATION SCHEME

QUALIFICATION SCHEME

Entry level

Training

Qualification

Possessing requirements: entry level, attendance and pass the training course, CV requirements

multiple choice test, made of 20 questions concerning energy audit, management, economical and technical planning, implementation and monitoring in the residential sector

written test based on a residential sector management and auditing case study

oral test based on both the case study and all relevant competence areas



TRAINING COURSE

Module	h	Methodology	Assessment methodology	Ecvet credits
1. Introduction to energy auditing in residential sector	12	Online resources - Lesson (on line or in presence) - Tutor online	Multiple choice (10 questions)	0,5
2. Legislation, regulations and contracts in residential sector	5	Online resources - Lesson (on line or in presence) - Tutor online	Multiple choice (10 questions)	0,5
3. Building envelope	8	Online resources - Lesson (on line or in presence) - Tutor online	Multiple choice (10 questions)	0,5
4. Heating, ventilation, air conditioning and hot water systems in residential sector	8	On line resources - Lesson (on line or in presence) - Exercises/simulations/lab - - Tutor on line	Multiple choice (10 questions)	0,5
5. Lighting systems, domestic appliances and other energy consuming devices in residential sector	7	On line resources - Lesson (on line or in presence) - Exercises/simulations/lab - - Tutor on line	Multiple choice (10 questions)	0,5



TRAINING COURSE

Module	h	Methodology	Assessment methodology	Ecvet credits
6. Renewable energy sources in residential sector	1	Online resources - Lesson (on line or in presence) - Tutor online	Multiple choice (10 questions)	0,5
7. Economic assessment	6	On line resources - Lesson (on line or in presence) Simulations - Tutor on line	Multiple choice (10 questions)	0,5
8. Energy audit methodology	13	On line resources - Guided simulations, exercises, project work - Tutor on line	Multiple choice (10 questions) and Case study	1,5
9. Project management	4	Online resources - Lesson (on line or in presence) - Tutor online	Multiple choice (10 questions)	0,5
10. Communication and marketing	6	Online resources - Lesson (on line or in presence) - Tutor online	Multiple choice (10 questions)	0,5
Totale Crediti ECVET				6



Thank you for your attention

manager@agenateramo.it

RENAEL - AGENA